

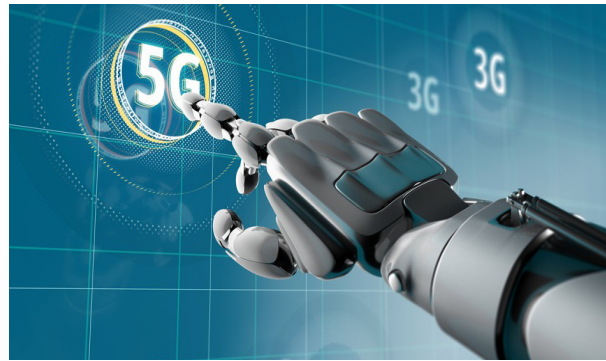


**TÜRK HAVACILIK  
UZAY SANAYİİ**



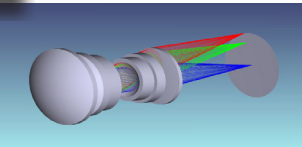
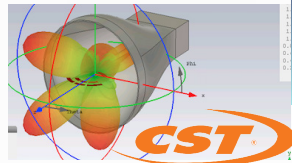
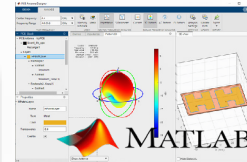
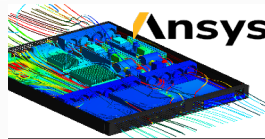
### WHY SBTU LEADER DEFENSE INDUSTRY WITH STRONG COLLABORATION?

- Our students will find a chance
- To have a lecture by active business people who have academic title,
- To study with thesis supervisor,
- To complete their workplace education as part of engineering education system of 7+1 and 2 terms of intern education in this defense industry,
- To have work experience in industry companies from their 3rd grade term,
- To participate in projects which are conducted with leader defense industry companies.



### WHY SBTU PROGRAMING AND SIMULATING SUPPORTED EDUCATION?

- » When students will be graduated, they will have full knowledge of current popular software languages like MATLAB, Python, VHDL, C++, and they will have comprehensive knowledge of simulating programs such as LabVIEW, Altium, Ansys, AutoCAD, CST, OpticStudio



### WHY SBTU? EDUCATION MODEL BASED ON PRACTICES

» It is aimed to provide permanent learning by integrating software and simulation model into the classes and projects.

#### » In this model:

- 1 United lesson programs and related classes are presented as a module in each term.
- 2 Common projects involving processed lessons will be given in each module to provide students transform theories to practices easily.
- 3 Elective modules will make students specialized.
- 4 Students will complete at least 10 projects in their Bachelor of Engineering process, they will have problem-solving ability and be high self-confident engineer.



## WHY SBTU AND MORE?

### » You will find a chance

- To follow all the world and to have easy communication skill via 100% English Education,



» To apply for students exchange programmes such as Erasmus



» Meet dynamic academic crew including specialized and foreign staff, who have international experiences,

» To participate in the students communities, which provide personal development and social-cultural improvements,

» To join in the high end innovative design laboratories.

## LABORATORIES:

- BASIC ELECTRONICS LAB.
- CONTROL LAB.
- COMMUNICATION LAB.
- DIGITAL DESIGN AND FPGA LAB.
- MICROPROCESSOR LAB.
- ARTIFICIAL INTELLIGENCE AND ROBOTICS LAB.
- ELECTRO-OPTICS AND LASER SYSTEMS LAB.
- OPTICAL SENSORS LAB.
- RF & MICROWAVE LAB.
- ELECTRICAL MACHINES AND POWER ELECTRONICS LAB.
- 3D DESIGN AND PRINTERS LAB.



## SBTU EEM WHERE CAN GRAD STUDENTS WORK?

» Electrical and Electronics Engineering department getting importance and empowering itself with software and hardware has become a discipline which is required for almost all fields. Grad students will find a chance to be a part of current and future sector in this field.

- Defence and Aviation
- Software and Informatics
- Robotics and Control Systems
- Communication Technology
- Automotive Technology
- Renewable energy sources
- Energy Generation, Transmission and Distribution
- Health Technology
- Agricultural Technology



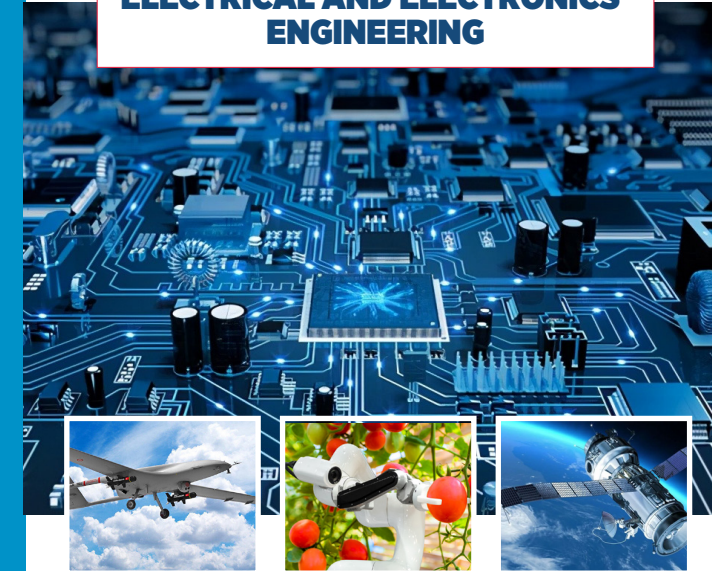
**SBTU Electrical and Electronics Engineering Department will accept students for Bachelor of Engineering in 2022.**

You are invited to SBTU Electrical and Electronics Engineering Department in the Faculty of Engineering and Natural Sciences.



**If you want to be a required engineer in the field of specialized defense of our country, you can prefer SBTU.**

FACULTY OF ENGINEERING AND NATURAL SCIENCES  
**ELECTRICAL AND ELECTRONICS ENGINEERING**



**HUGE CAREER OPPORTUNITIES**

For Detailed Information:



**UNDERGRADUATE STUDENTS WILL ALSO BE ADMITTED IN 2022.**